

Rapport météorologique Station de Sain Bel (69)

Août

2012

Données journalières

| Jour du Mois | T moyenne | T mini | T maxi | Précipitations | Vent | | Vent |
|--------------|-----------|--------|--------|----------------|-------|-------------|-----------|
| | Tm | Tn | Tx | Rr | Moyen | Rafale maxi | Direction |
| | °C | °C | °C | mm | km/h | km/h | Moyenne |
| 01/08/2012 | 21.5 | 12.8 | 33.9 | 26.2 | 4.5 | 51.5 | SW |
| 02/08/2012 | 20.9 | 15.2 | 26.0 | 0.2 | 3.7 | 22.5 | ENE |
| 03/08/2012 | 20.0 | 14.3 | 26.1 | 0.0 | 2.6 | 17.7 | SW |
| 04/08/2012 | 19.2 | 13.2 | 25.4 | 5.2 | 1.9 | 14.5 | WSW |
| 05/08/2012 | 18.8 | 15.4 | 26.2 | 16.8 | 3.5 | 45.1 | SW |
| 06/08/2012 | 17.7 | 14.6 | 23.1 | 6.4 | 1.8 | 19.3 | N |
| 07/08/2012 | 17.2 | 11.3 | 23.1 | 0.0 | 2.9 | 19.3 | SW |
| 08/08/2012 | 17.9 | 10.1 | 24.9 | 0.2 | 4.0 | 24.1 | ENE |
| 09/08/2012 | 19.9 | 12.6 | 26.3 | 0.0 | 4.8 | 25.7 | ENE |
| 10/08/2012 | 20.3 | 13.7 | 26.3 | 0.0 | 5.8 | 27.4 | ENE |
| 11/08/2012 | 19.9 | 12.2 | 27.2 | 0.0 | 3.1 | 16.1 | ENE |
| 12/08/2012 | 19.6 | 14.3 | 25.1 | 0.0 | 3.9 | 19.3 | WSW |
| 13/08/2012 | 19.7 | 13.1 | 25.6 | 0.2 | 2.3 | 16.1 | WSW |
| 14/08/2012 | 21.6 | 13.7 | 30.0 | 0.0 | 3.1 | 17.7 | WSW |
| 15/08/2012 | 22.4 | 14.4 | 32.2 | 1.4 | 3.5 | 33.8 | SW |
| 16/08/2012 | 19.0 | 14.4 | 24.1 | 6.6 | 3.7 | 19.3 | ENE |
| 17/08/2012 | 20.3 | 12.2 | 28.6 | 0.0 | 2.6 | 16.1 | WSW |
| 18/08/2012 | 23.5 | 13.9 | 35.7 | 0.0 | 1.9 | 14.5 | SW |
| 19/08/2012 | 25.2 | 15.2 | 36.6 | 0.0 | 2.7 | 24.1 | WSW |
| 20/08/2012 | 26.1 | 20.4 | 31.7 | 0.0 | 4.5 | 20.9 | SW |
| 21/08/2012 | 25.7 | 17.3 | 35.2 | 0.8 | 2.6 | 17.7 | WSW |
| 22/08/2012 | 23.2 | 19.3 | 27.3 | 0.0 | 3.9 | 20.9 | SW |
| 23/08/2012 | 23.0 | 16.7 | 30.6 | 1.0 | 3.9 | 43.5 | SW |
| 24/08/2012 | 20.7 | 18.2 | 25.1 | 21.4 | 2.4 | 19.3 | ENE |
| 25/08/2012 | 19.0 | 14.7 | 23.9 | 0.2 | 2.7 | 22.5 | SW |
| 26/08/2012 | 16.8 | 12.1 | 22.0 | 0.0 | 3.4 | 19.3 | SW |
| 27/08/2012 | 17.1 | 9.3 | 25.9 | 0.2 | 2.6 | 17.7 | SW |
| 28/08/2012 | 18.2 | 11.7 | 25.3 | 0.0 | 2.7 | 22.5 | SW |
| 29/08/2012 | 19.9 | 13.8 | 26.7 | 1.4 | 2.4 | 49.9 | SW |
| 30/08/2012 | 18.3 | 14.0 | 22.5 | 0.2 | 3.1 | 17.7 | NNE |
| 31/08/2012 | 13.9 | 10.3 | 17.2 | 3.8 | 5.0 | 33.8 | N |

Moyennes et Indicateurs

Moyennes du Mois et cumul des précipitations

| | | | | | |
|-------------------------|------|------------------------------|------|--------------------|------|
| T Moyenne (Tmm) °C | 20.2 | T mini du mois (Tnn) °C | 9.3 | vent moyen km/h | 3.3 |
| T mini moyenne (Tnm) °C | 14.0 | T maxi du mois (Tmx) °C | 36.6 | rafale maxi (km/h) | 51.5 |
| T maxi moyenne (Txm) °C | 27.1 | Cumul Précipitations mois mm | 92.2 | | |

Indicateurs : nombre de jours avec conditions

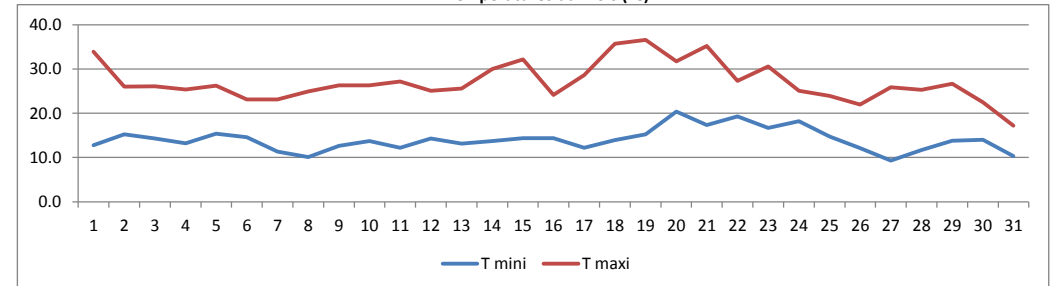
| | | | |
|-----------|----|----------------|---|
| Tx ≥ 35°C | 3 | Tn ≤ 0°C (Gel) | 0 |
| Tx ≥ 30°C | 8 | Tn ≤ -5°C | 0 |
| Tx ≥ 25°C | 23 | Tn ≤ -10°C | 0 |
| Tx ≥ 20°C | 30 | Tx ≤ 0°C | 0 |

| | | | |
|------------|----|-----------------|----|
| Rr ≥ 1 mm | 10 | Vent ≥ 20 km/h | 15 |
| Rr ≥ 5 mm | 6 | Vent ≥ 50 km/h | 1 |
| Rr ≥ 10 mm | 3 | Vent ≥ 100 km/h | 0 |

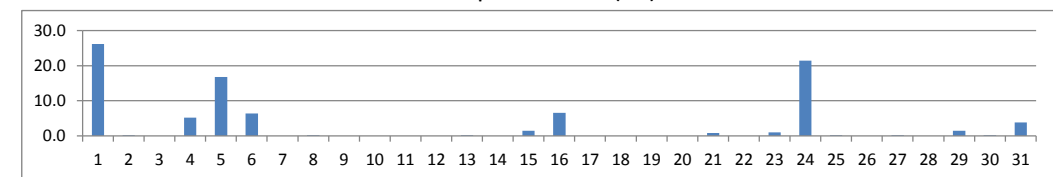


© Jérôme Piche - Reproduction interdite
<http://jerome.piche.free.fr>

Températures du mois (°C)



Précipitations du mois (mm)



Vent moyen et rafales (km/h)

