

# Rapport météorologique **Septembre 2011**

## Station de Sain Bel (69)

### Données journalières

| Jour du Mois | T moyenne | T mini   | T maxi   | Précipitations<br>Rr<br>mm | Vent          |                     | Vent<br>Direction<br>Moyenne |
|--------------|-----------|----------|----------|----------------------------|---------------|---------------------|------------------------------|
|              | Tm<br>°C  | Tn<br>°C | Tx<br>°C |                            | Moyen<br>km/h | Rafale maxi<br>km/h |                              |
| 1            | 19.9      | 13.2     | 27.9     | 3.8                        | 2.8           | 24.1                | SSW                          |
| 2            | 21.1      | 15.2     | 28.3     | 0.2                        | 1.6           | 12.9                | WSW                          |
| 3            | 20.3      | 15.9     | 24.6     | 0.0                        | 1.8           | 19.3                | SSW                          |
| 4            | 19.3      | 17.8     | 22.7     | 5.8                        | 1.4           | 12.9                | NNW                          |
| 5            | 17.6      | 12.3     | 22.6     | 1.4                        | 2.1           | 19.3                | NW                           |
| 6            | 16.0      | 8.3      | 24.9     | 0.0                        | 2.8           | 16.1                | SSW                          |
| 7            | 17.1      | 10.9     | 23.5     | 0.0                        | 2.2           | 20.9                | SW                           |
| 8            | 18.3      | 11.2     | 25.4     | 0.0                        | 2.5           | 19.3                | WSW                          |
| 9            | 20.9      | 17.2     | 26.1     | 0.0                        | 1.9           | 16.1                | WSW                          |
| 10           | 21.7      | 14.0     | 29.9     | 0.0                        | 3.7           | 27.4                | SSW                          |
| 11           | 21.2      | 14.2     | 25.9     | 0.0                        | 4.0           | 35.4                | SSW                          |
| 12           | 18.9      | 11.1     | 27.1     | 0.0                        | 2.6           | 14.5                | SW                           |
| 13           | 20.3      | 14.4     | 26.1     | 2.4                        | 2.1           | 14.5                | WSW                          |
| 14           | 17.1      | 11.3     | 21.1     | 0.0                        | 3.0           | 22.5                | NNE                          |
| 15           | 14.9      | 7.3      | 22.6     | 0.2                        | 2.9           | 16.1                | SSW                          |
| 16           | 18.7      | 9.9      | 29.3     | 0.0                        | 1.9           | 16.1                | WSW                          |
| 17           | 17.5      | 15.0     | 21.1     | 2.0                        | 2.2           | 24.1                | W                            |
| 18           | 13.8      | 10.6     | 17.3     | 1.6                        | 2.8           | 35.4                | W                            |
| 19           | 12.4      | 9.9      | 15.8     | 3.2                        | 3.4           | 27.4                | NW                           |
| 20           | 13.6      | 7.3      | 19.3     | 0.0                        | 5.7           | 29.0                | SSW                          |
| 21           | 13.6      | 6.4      | 21.4     | 0.0                        | 2.4           | 16.1                | SW                           |
| 22           | 15.0      | 9.7      | 21.4     | 0.2                        | 4.3           | 22.5                | WSW                          |
| 23           | 14.5      | 8.1      | 21.3     | 0.0                        | 2.7           | 16.1                | SSW                          |
| 24           | 15.7      | 7.8      | 24.0     | 0.2                        | 2.4           | 14.5                | SW                           |
| 25           | 18.4      | 12.1     | 26.0     | 0.0                        | 3.1           | 19.3                | SSW                          |
| 26           | 18.3      | 11.2     | 26.6     | 0.0                        | 2.4           | 17.7                | SSW                          |
| 27           | 18.7      | 12.7     | 26.1     | 0.0                        | 4.7           | 27.4                | SW                           |
| 28           | 18.1      | 11.3     | 25.8     | 0.0                        | 3.2           | 20.9                | S                            |
| 29           | 18.5      | 11.7     | 27.0     | 0.2                        | 2.4           | 17.7                | SW                           |
| 30           | 17.9      | 11.0     | 26.7     | 0.0                        | 3.0           | 17.7                | SW                           |

### Moyennes et Indicateurs

#### Moyennes du Mois et cumul des précipitations

|                         |      |                              |      |                    |      |
|-------------------------|------|------------------------------|------|--------------------|------|
| T Moyenne (Tmm) °C      | 17.6 | T mini du mois (Tnn) °C      | 6.4  | vent moyen km/h    | 2.8  |
| T mini moyenne (Tnm) °C | 11.6 | T maxi du mois (Tmx) °C      | 29.9 | rafale maxi (km/h) | 35.4 |
| T maxi moyenne (Txm) °C | 24.3 | Cumul Précipitations mois mm | 21.2 |                    |      |

#### Indicateurs : nombre de jours avec conditions

|           |    |                |   |
|-----------|----|----------------|---|
| Tx ≥ 35°C | 0  | Tn ≤ 0°C (Gel) | 0 |
| Tx ≥ 30°C | 0  | Tn ≤ -5°C      | 0 |
| Tx ≥ 25°C | 15 | Tn ≤ -10°C     | 0 |
| Tx ≥ 20°C | 27 | Tx ≤ 0°C       | 0 |

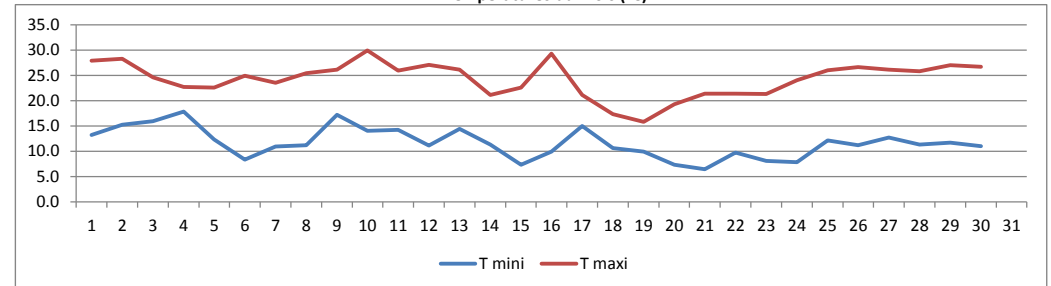
  

|            |   |                 |    |
|------------|---|-----------------|----|
| Rr ≥ 1 mm  | 7 | Vent ≥ 20 km/h  | 12 |
| Rr ≥ 5 mm  | 1 | Vent ≥ 50 km/h  | 0  |
| Rr ≥ 10 mm | 0 | Vent ≥ 100 km/h | 0  |

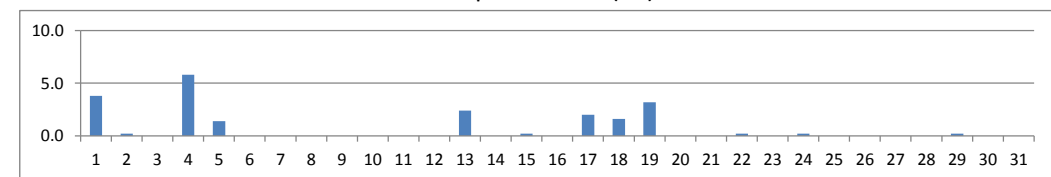


© Jérôme Piche - Reproduction interdite  
<http://jerome.piche.free.fr>

#### Températures du mois (°C)



#### Précipitations du mois (mm)



#### Vent moyen et rafales (km/h)

